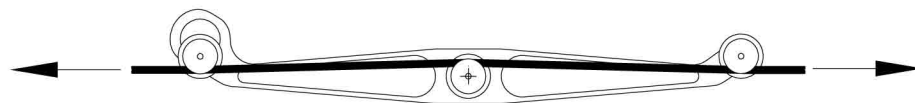


bracket width



material path

dimensions (mm)  
weight: approx. 2000g

### Roller variants



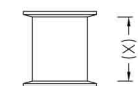
for cable  $\varnothing$  3-12mm

**R12**



for cable  $\varnothing$  12-54mm

**R50**



Ribbon Roller

for several flat materials

**RR(X)**

Schutzvermerk nach DIN 34 beachten		Allgemein- toleranz DIN 7168-f	Pr.Nr.	Maßstab 1:2 / A2	Mod.: CB
		Datum 06.02.08	Name vha	Werkstoff	
		Erst.		Tension sensor	
		Gepr.		Lock-lever on front side	
		Norm		Z.-Nr.: K 680661	
		I.St.		Blatt 1 v. 1Bl.	
Zust.	Änderung	Datum	Name	Urspr. K674968	Ers. für Z.Nr.:
					ers. durch Z.Nr.: